

THE ECONOMIC CONTRIBUTION OF THE  
**Waste Management  
& Secondary  
Resources Industry**  
to the Queensland Economy



Queensland's Waste Management and Secondary Resources Industry (The Industry), provides world class infrastructure and services in the areas of waste collection processing, recycling and disposal to the community.

Industry businesses work across all areas including waste transport, processing, fuel manufacture and landfill management. They process all material streams including municipal, commercial, industrial, construction, hazardous and liquids.

The Industry recovers valuable secondary resources generated during extraction and manufacturing processes and those later discarded by society, thereby driving a circular economy and directly contributing to the economic growth of the State.

The recovery of secondary resources and efficient management of waste in Queensland results in a variety of tangible environmental benefits including energy savings, avoidance of greenhouse gas emissions, water savings as well a reduction of emissions to air, water and land.

In addition to these tangible benefits the Industry makes a considerable contribution to the Queensland economy in the jobs, investment and economic activity that it generates.

A vibrant and competitive Waste Management and Secondary Resources Industry with a social license to operate is crucial to the prosperity and growth of our State.



Rick Ralph CEO WRIQ

Queensland's Waste Management and Secondary Resources Industry provides infrastructure and services to the community in the collection, processing, recycling and disposal of waste. The Industry is an important contributor to the Queensland economy. Results of a macro-economic analysis of the Industry reveal the following.



Key facts include:



842  
BUSINESSES

842 businesses operating of which 828 are defined as small businesses



9.8m  
TONNES

Collected, processed, recycled and disposed of 9.8 million tonnes of waste



4.4m  
TONNES

Recovered and diverted from landfill disposal.

The Industry each year **directly**:



6432  
JOBS

Provides 6,432 jobs to Queenslanders



\$504m  
PAID IN SALARIES

Salaries paid to Queenslanders



\$78,345  
AVG ANNUAL SALARY

Provides an average livelihood to each employee (average Qld annual salary of \$59,316)



\$2.15b  
COLLECTIVE  
TURNOVER



\$830m  
TO THE ECONOMY



\$284m  
INVESTMENTS

Land, buildings, plant and equipment, collection vehicles and collection bins



\$158m  
TAXES, RATES AND  
CHARGES

Commonwealth and State taxes, Local Government rates and charges



\$1.5b  
MANAGE \$1.5B ASSETS  
INCLUDING VEHICLES

Manages \$1.5 billion in assets including the operation of 1,530 collection vehicles



1530  
COLLECTION  
VEHICLES

The Industry **indirectly** contributes:

The Industry also indirectly contributes to Queensland through flow-on demand for goods and services through expenditure by waste management business on goods and services supplied by other businesses in Queensland and the expenditure of industry workers' income on goods and services supplied by other Queensland businesses.



5403  
JOBS

Provides a further 5,403 jobs



\$321m  
PAID IN SALARIES

Provides an additional \$321 million in wages and salaries



\$667m  
TO THE ECONOMY

To the Queensland economy through flow on demand for goods and services.

IN TOTAL THE INDUSTRY EACH YEAR:

■ Direct  
■ Indirect



11,835  
JOBS TO  
QUEENSLANDERS

Provides 11,835 jobs to Queenslanders (one in every 200 jobs)



\$825m  
PAID IN  
SALARIES

\$825 million paid in wages and salaries



\$1.5b  
TO THE STATE  
ECONOMY

Contributes \$1.5 billion toward Queensland's gross state product

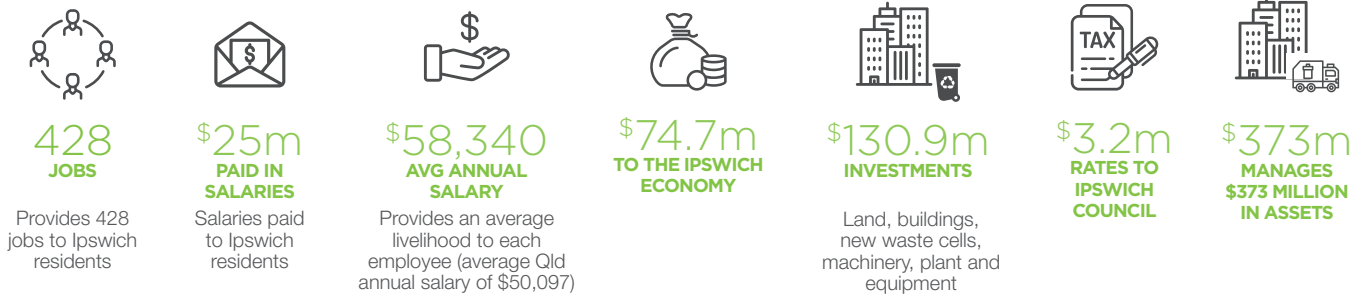


1516  
BUSINESSES  
THROUGHOUT QLD

Supports 1,516 businesses throughout Queensland.

# The economic contribution of the Waste Management and Secondary Resources Industry to the Ipswich Economy each year

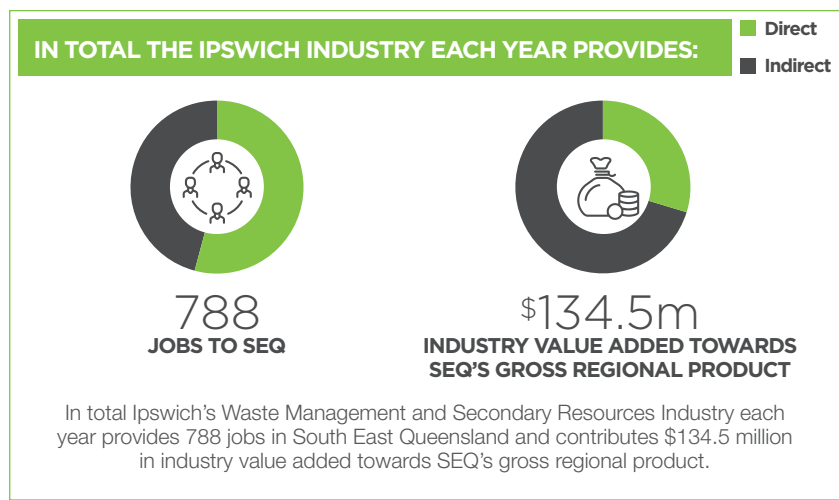
The Ipswich Industry **directly** contributes:



The Ipswich Industry **indirectly** provides



360 jobs and \$58.8 million in industry value added to the South East Queensland economy through flow on demand for goods and services.



**Regional Estimates** By Queensland region, estimates of direct and indirect employees, wages and salaries and Industry value add are:

	EMPLOYEES			WAGES AND SALARIES (\$ millions)			VALUE ADD (\$ millions)		
	Direct	Indirect	Total	Direct	Indirect	Total	Direct	Indirect	Total
Greater Brisbane	3,131	2,630	5,761	245	156	401	406	325	731
Gold Coast	785	659	1444	61	39	101	102	81	183
Sunshine Coast	474	398	872	37	24	61	61	49	111
Cairns	329	276	605	26	16	42	43	34	77
Central Queensland	300	252	552	24	15	38	39	31	70
Darling Downs – Maranoa	171	143	314	13	9	22	22	18	40
Mackay – Isaac Whitsunday	231	194	424	18	11	30	30	24	54
Queensland Outback	109	92	201	9	5	14	14	11	26
Toowoomba	203	171	374	16	10	26	26	21	47
Townsville	312	262	574	24	16	40	40	32	73
Wide Bay	388	326	714	30	19	50	50	40	91
<b>Queensland</b>	<b>6,432</b>	<b>5,403</b>	<b>11,835</b>	<b>504</b>	<b>321</b>	<b>824</b>	<b>834</b>	<b>667</b>	<b>1,501</b>



Waste, Recycling Industry Association (Qld)

A PO Box 1335 Oxley QLD 4075

P +61 429 984 187

E admin@wriq.com.au

wriq.com.au